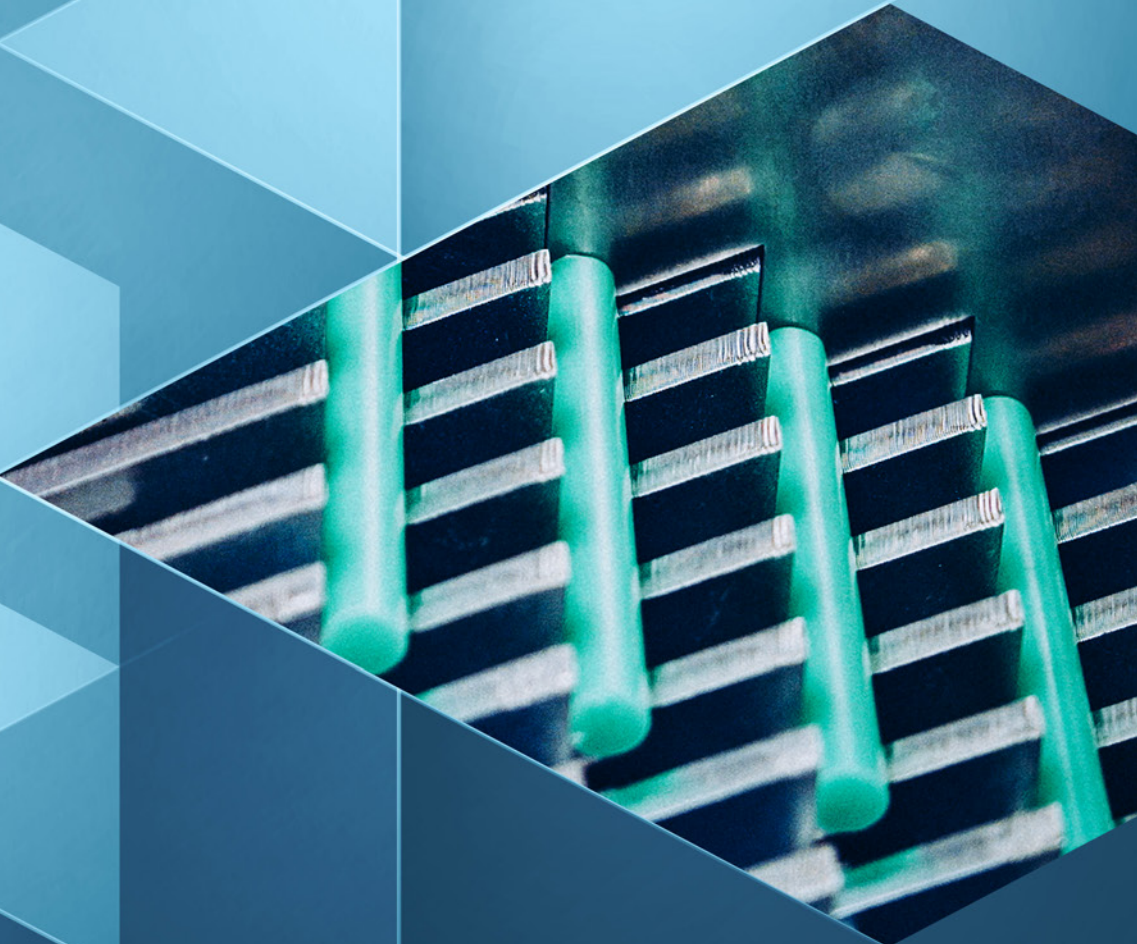


# Bench stroke loader MSHL/TSHL



Your problem solver in automation

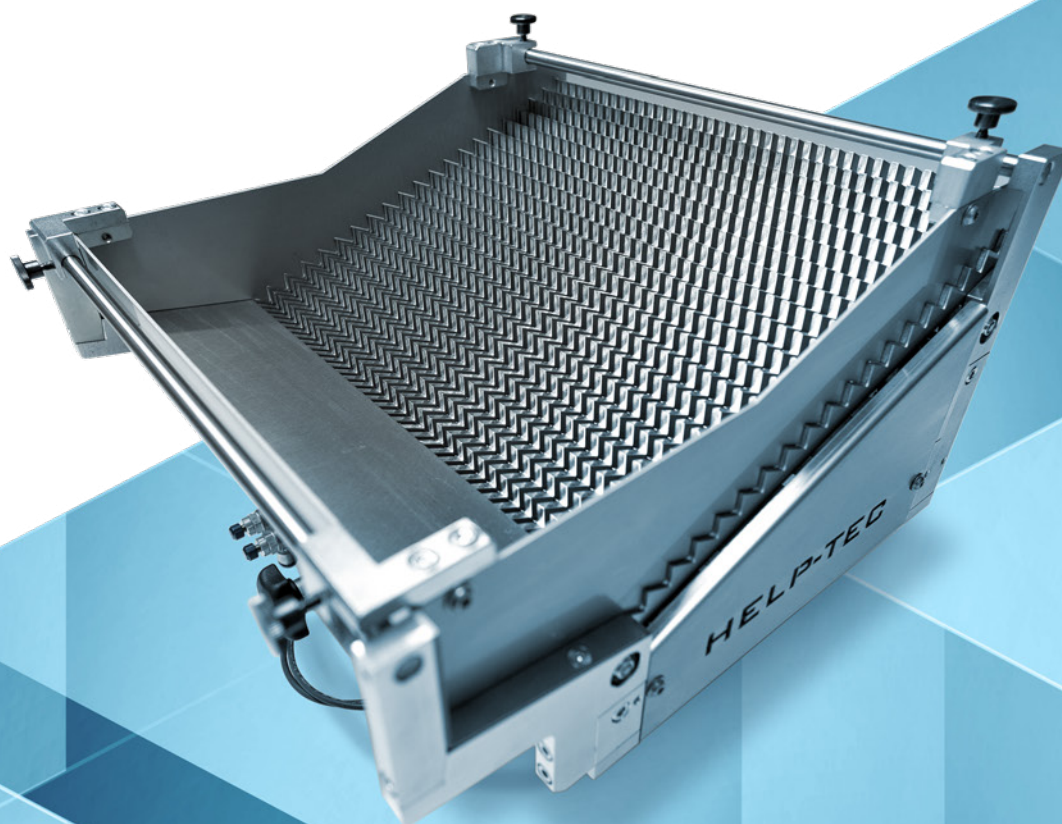


---

The salient features of the stroke loaders are very short change-over times, simple handling and large supplies vats. Both types are designed in such a way that they can be used either for loading (Types TSHL/SHL) or unloading (Types TSHE/SHE) depending on your requirements.

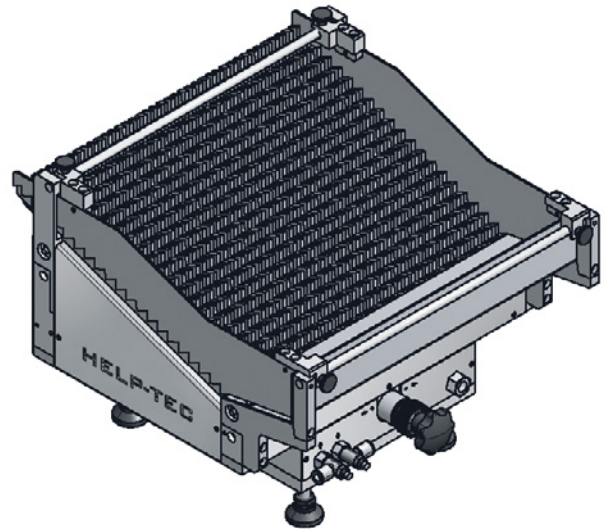
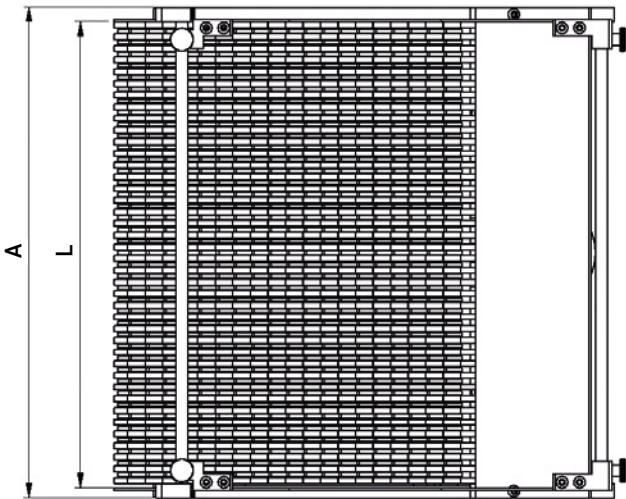
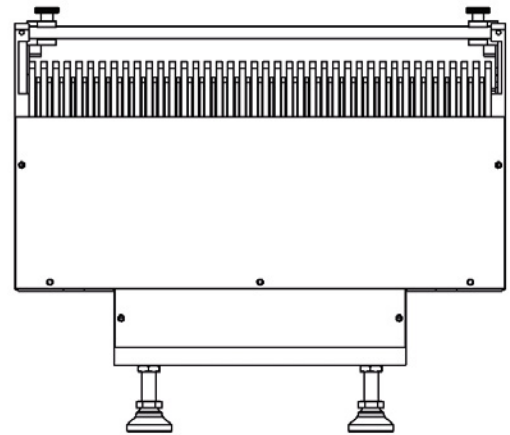
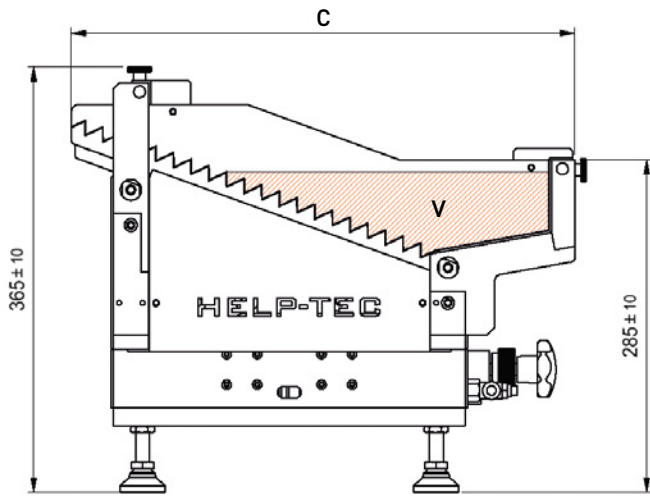
These bench-type stroke loaders are particularly suited for round, hexagonal and octagonal bars, drift punches, screwdriver blades, motor shafts, taps and rock drill blanks, hard metal bars, glass tubes, rod-shaped parts and many others.

The company **Help-Tec Automation AG** is active in handling technology for well-known national and international clients. It deals with the manufacture of equipment as well as repair and spare parts service.



# Type MSHL / MSHE

Ø 0.04 inch – 0.31 inch

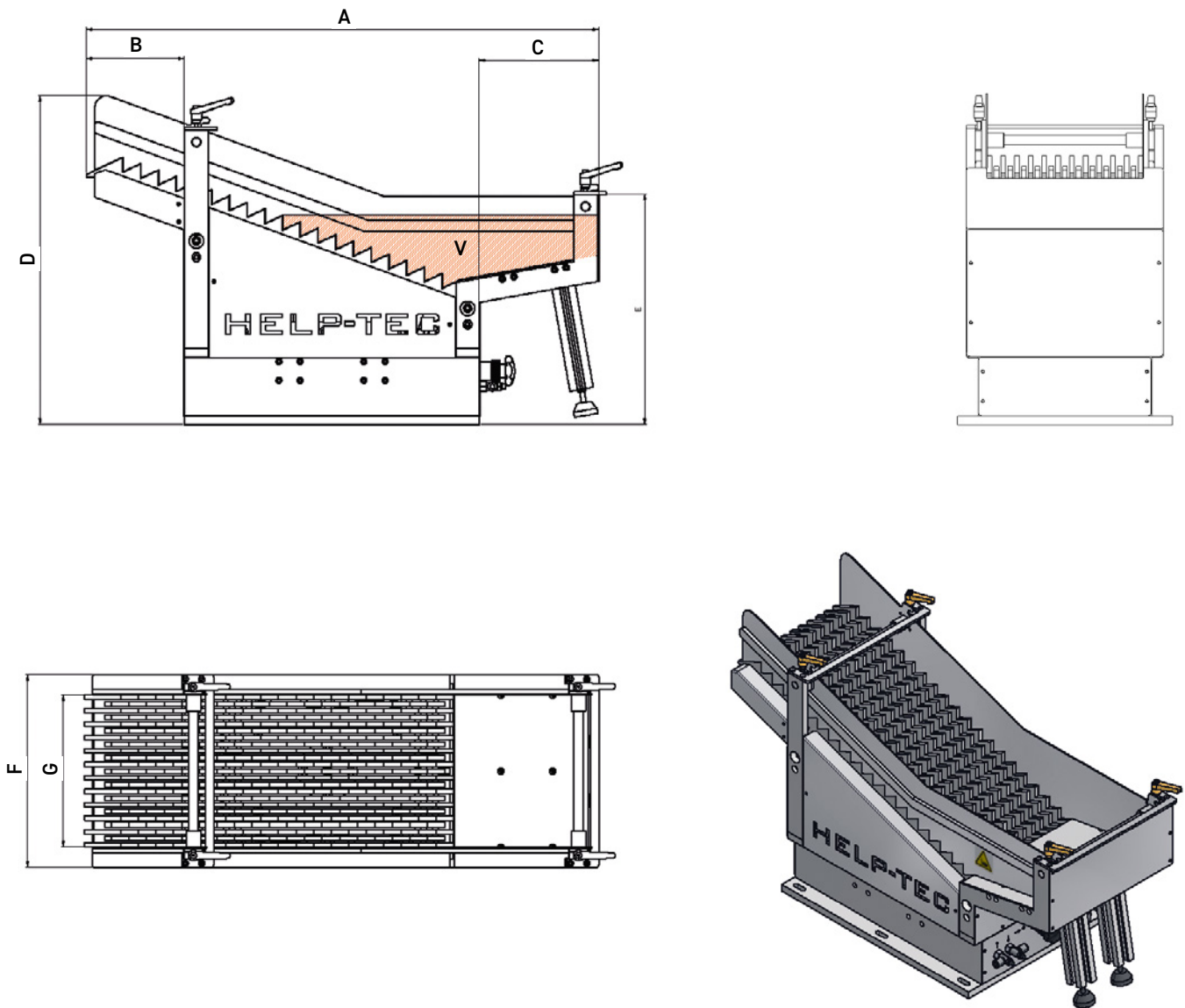


TECNICAL DATA [INCH]		MSHL 8/250	MSHL 8/400
Range of diameter	d	Ø 0.04 – 0.31	Ø 0.04 – 0.31
Range of lenght	L	1.97 – 9.84	1.97 – 15.75
	A	10.63	16.54
	C	16.93	16.93
Weight capacity		110 lbs	110 lbs
Filling surface*	V	17.05 sq.in	17.05 sq.in
Capacity: Number of pieces	$N = \frac{F \text{ sq.in}}{d^2 [\text{inch}] \times 0.866}$	Ø 0.04 = 12 000 Ø 0.31 = 180	Ø 0.04 = 12 000 Ø 0.31 = 180

\* larger filling surface on request

# Type TSHL / TSHE

Ø 0.08 inch – 1.18 inch



TECNICAL DATA [INCH]		TSHL/TSHE 15/250	TSHL/TSHE 15/400	TSHL/TSHE 30/250	TSHL/TSHE 30/400
Range of diameter	d	Ø 0.08 – 0.59	Ø 0.08 – 0.59	Ø 0.08 – 1.18	Ø 0.08 – 1.18
Range of lenght	G	2.36 – 9.84	2.36 – 15.75	2.36 – 9.84	2.36 – 15.75
	A/B	34.25 / 6.57	34.25 / 6.57	39.13 / 11.42	39.13 / 11.42
	C/D	7.99 / 21.38	7.99 / 21.38	7.99 / 27.8	7.99 / 27.8
	E/F	14.76 / 12.99	14.76 / 18.9	20.08 / 12.99	20.08 / 18.9
Weight capacity		220 lbs	220 lbs	220 lbs	220 lbs
Filling surface*	V	55 sq.in	55 sq.in	55 sq.in	55 sq.in
Capacity: Number of pieces	$N = \frac{F \text{ sq in}}{d^2 [\text{inch}] \times 0.866}$	Ø 0.08=10000 Ø 0.59=180	Ø 0.08=10000 Ø 0.59=180	Ø 0.2=1600 Ø 1.18=46	Ø 0.2=1600 Ø 1.18=46

\*larger filling surface on request

## Price list

<b>MINI-BENCH STROKE LOADER</b>		<b>250</b>	<b>400</b>
MSHL/MSHE	8	13 250.–	15 400.–

<b>TABLE-TOP STROKE LOADER</b>		<b>250</b>	<b>400</b>
TSHL/TSHE	15	18 815.–	19 875.–
TSHL/TSHE	20	18 815.–	19 875.–
TSHL/TSHE	30		20 935.–
Extension			795.–/4 in

<b>OPTIONS</b>		<b>250</b>	<b>400</b>
Special rake			on request
Special length			on request
Base frame			on request
Removal prism <b>MSHL</b>		940.–	980.–
Removal prism <b>TSHL</b>		2 820.–	2 940.–
Volume expansion			1 272.–

Net prices in CHF, calculated ex location in Pieterlen, unpacked



## Your problem solver in automation

Do you need an automation solution tailored to your needs? With our many years of experience in the development, construction and execution up to the suitable software solution, we can realize customer-specific projects on the highest quality level and on the newest state of the technology.

Have we aroused your interest? In our overview brochure you will get an insight into the numerous automation solutions of Help-Tec Automation AG. Simply scan the following QR-Code.



Help-Tec Automation AG  
Boole 4 | CH-2545 Pieterlen  
info@help-tec.ch



Overview brochure  
Help-Tec Automation AG



Boole 4 | CH-2545 Pieterlen  
Telefon +41 32 327 00 00  
help-tec.ch | info@help-tec.ch